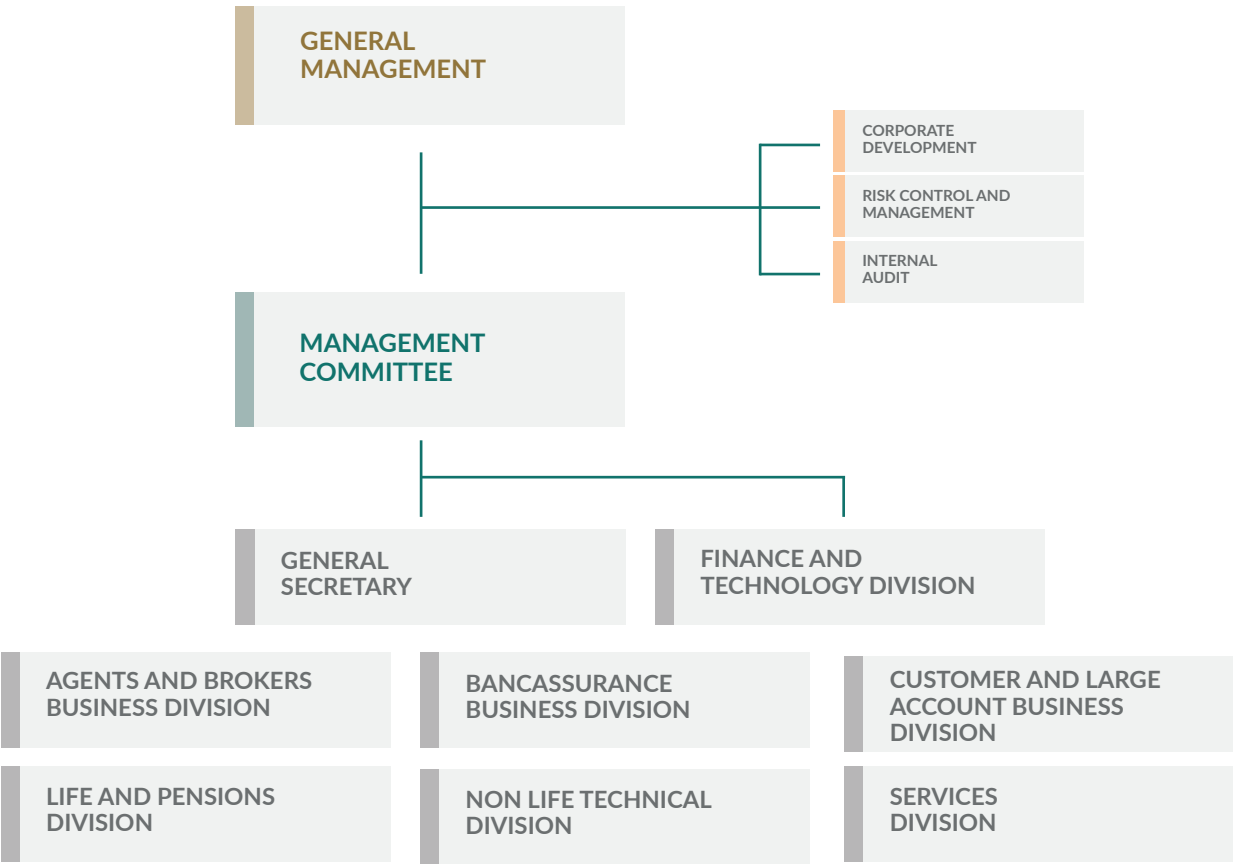


# 06.

## Caser Group Structure



ORGANISATION CHART



## INVESTEE COMPANIES

(AS AT 31 DECEMBER 2020)

- ACIERTA ASISTENCIA, S.A.
- ALDEBARÁN RIESGO, S.C.R., S.A.U.
- ARRIENDA GESTIÓN, S.A.
- ATENDAE ASISTENCIA, S.A.
- AUDISEC SEGURIDAD DE LA INFORMACIÓN, S.L.
- BARLOVENTO RECURSOS NATURALES, S.L.
- BECIER ASSEGUANCES, S.A.
- CASAVI, ASISTENCIA EN VIAJE, S.L.U.
- CA VIDA ASSEGUANCES, S.A.
- CASER DIRECT, CORREDURÍA DEL GRUPO
- ASEGURADOR CASER, S.A.
- CASER MARKETING DIRECTO, S.L.U.
- CASER PENSIONES, ENTIDAD GESTORA
- DE FONDOS DE PENSIONES, S.A.
- CASER PREVISIÓN INDIVIDUAL, E.P.S.V.
- CASER RESIDENCIAL, S.A.U.
- CASER RESIDENCIAL GESTIÓN, S.L.U.
- CASER RESIDENCIAL INMOBILIARIA, S.A.U.
- CASER RESIDENCIAL RETIRO, S.L.
- CASER SERVICIOS DE SALUD, S.A.U.
- CASER VALORES E INVERSIONES, A.V., S.A.U.
- CENTRE GERONTOLIG MYCES, S.L.U.
- CENTRO SOCIO SANITARIO LOGROÑO, S.L.U.
- CENTROS ASISTENCIALES
- SAN TORCUATO, S.L.U.
- COMPAÑIAS PARTICIPADAS
- CLÍNICAS AVETMAS, S.A.U.
- CLÍNICA PARQUE, S.A.U.
- CLÍNICA PARQUE FUERTEVENTURA, S.L.U.
- C Y E BADAJOZ, SERVICIOS SOCIO SANITARIOS, S.A.
- C Y E SERVICIOS SOCIO SANITARIOS, S.A.U.
- EXTREMEÑA DE GESTIÓN SANITARIA Y ESPECIALIDADES MÉDICAS S.L.U.
- EXTREMEÑA DE PATRIMONIO PARA
- LA SANIDAD, S.L.U.
- GESINCA CONSULTORA DE PENSIONES Y SEGUROS, S.A.
- HOSPITAL DE LLEVANT, S.L.U.
- INMOCASER, S.A.U.
- JALFIT BIENESTAR, S.A.U.
- JALSOSA, S.L.
- MEDICAL DISCOUNT, S.L.U.
- PARQUE HOSPITALES BALEARES, S.L.U.
- RESIDENCIA DEL HOSPITAL DE LLEVANT, S.L.U.
- RESIDENCIA NUEVA VIDA, S.A.
- SA NOSTRA COMPAÑÍA DE SEGUROS DE VIDA, S.A.
- SERVICIOS INTEGRALES GERONTOLÓGICOS Y SANITARIOS, S.A.U.
- TH MANTENIMIENTO S.L.



**FERNANDO DE LORENZO**  
GENERAL SECRETARY

The process of shareholder restructuring was completed in 2020. What does this mean for Caser?

Indeed, the Swiss group Helvetia has acquired 70% of the Caser Group, thus beginning a new and exciting time as part of a major international insurance group, that is stable and solvent and which is also committed to people, our business model and the ability to stay one step ahead that characterises us.

What role do people play in Caser?

More than 5,100 people are now part of the Caser Group. This significant figure has evolved in recent years in step with the growth of other businesses based on the provision of services that share synergies with the insurer. It is a quite significant figure that takes on even greater importance in a scenario like the current one. The key undoubtedly lies in boosting talent and the training of teams, that is, in a commitment to professional development.

What has been the trajectory of the Caser Foundation?

Throughout its more than ten years of existence, it has become an important reference in the area of dependency and disability. Aware of the positive impact that prevention and the promotion of healthy habits have on the development of people's autonomy, it continues to expand its goals and promote initiatives that are highly regarded both by its beneficiaries and by society as a whole.