

01.

Financial Figures



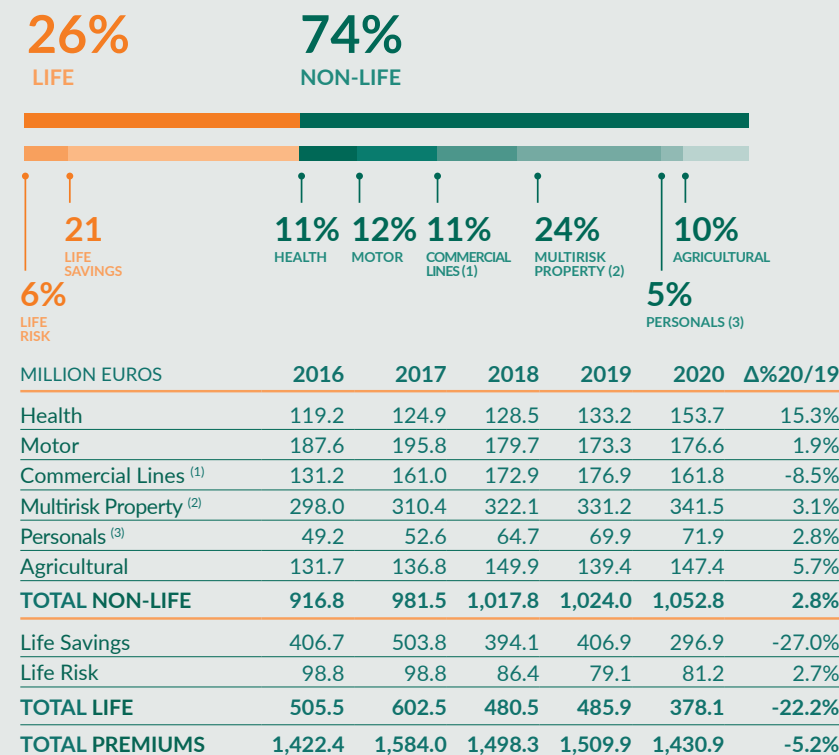
INCOME

MILLION EUROS	2016	2017	2018	2019	2020	Δ%20/19
Premiums	1,422.4	1,584.0	1,498.3	1,509.9	1,430.9	-5.2%
Non-Life	916.8	981.5	1,017.8	1,024.0	1,052.8	2.8%
Life	505.5	602.5	480.5	485.9	378.1	-22.2%
Financial income	212.8	217.9	189.1	209.5	164.5	-21.5%
Subsidiaries	97.2	110.9	132.2	175.3	162.1	-7.6%
Securities agency				92.1	62.6	
Other income	8.7	8.6	7.8	7.2	7.9	9.1%
TOTAL INCOME	1,741.0	1,921.4	1,827.4	1,994.0	1,828.0	-8.3%
Contributions to pension plans	-165.5	19.6	-196.9	55.0	117.1	112.8
TOTAL INCOME AND CONTRIBUTIONS	1,575.5	1,941.0	1,630.5	2,049.1	1,945.2	-5.1%

NET CLAIMS RATIO/NET ALLOCATED PREMIUMS

	2016	2017	2018	2019	2020	Δ%20/19
TOTAL NON-LIFE	59.6%	60.7%	60.6%	58.3%	57.2%	-1.0%
TOTAL	71.9%	73.9%	70.9%	70.5%	67.0%	-3.5%

PREMIUMS WRITTEN



(1) Includes the following branches: Occupational Accidents, Machinery Breakdown, Collateral, Fires, Multirisk Savings, Multirisk Other, SMEs, Pecuniary Losses, Civil Liability General, Civil Liability Senior Positions, Civil Liability Professional, Nuclear Risks, Theft, Ten-Year Comprehensive Construction Risk, Comprehensive Construction Risk, Comprehensive Assembly, Comprehensive, Material Damage, Mechanical Guarantee, Financial Losses, Comprehensive Card Protection, Domestic Appliance Warranty, Card Theft, Transport.

(2) Includes the following branches: Home, Shops, Real Estate and Rental Protection.

(3) Includes the following branches: Private Accidents, Telemarketing Incidents, Individual Comprehensive, Mortgage Guarantee, Payment Protection, Property Ownership, Legal Defence, Travel Assistance, Horse Riding and Burial.

INCOME FROM OTHER BUSINESSES



Total Income from other Businesses
171.7
MILLION EUROS

- 50.3%
- 22.8%
- 12%
- 3.5%
- 11.4%

MILLION EUROS	2016	2017	2018	2019	2020	Δ%20/19
Care homes	60.8	65.8	72.7	84.9	86.3	1.7%
Hospitals	20.6	23.6	27.6	46.9	39.2	-16.4%
Acierta Asistencia	10.9	14.0	22.8	29.4	20.6	-29.9%
Telemarketing	5.3	5.5	5.8	5.9	6.0	1.8%
Other activities	8.3	10.7	12.4	17.8	19.6	9.8%
TOTAL INCOME	105.9	119.7	141.3	184.9	171.7	-7.1%

RESULTS INVESTEES

MILLION EUROS	2016	2017	2018	2019	2020	Δ%20/19
Care homes	7.7	8.8	9.5	11.0	5.3	-51.6%
Hospitals	-0.3	0.6	1.0	1.8	-4.8	-367.9%
Acierta Asistencia	0.6	0.5	0.4	1.4	-0.1	-104.5%
Telemarketing	0.7	1.3	1.4	3.2	3.2	2.3%
Other activities	1.2	1.8	0.9	1.9	0.7	-63.1%
TOTAL RESULTS	9.9	13.0	13.3	19.3	4.3	-77.5%

SOLVENCY



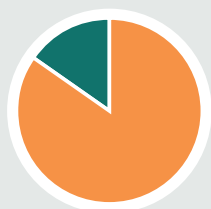
165%
Solvency Ratio

RESULTS
(CASER GROUP)

MILLION EUROS	2016	2017	2018	2019	2020	Δ%20/19
BEFORE TAX	109.4	87.2	112.8	96.3	31.3	-67.5%
Companies tax	-69.2	-20.9	-25.5	-24.2	13.8	N/A
Profit/(loss) for the year	40.3	66.3	87.3	72.1	45.1	-37.4%
SHAREHOLDERS' EQUITY	889,944	938,768	994,205	1,022,425	1,070,069	

ASSETS UNDER MANAGEMENT
MILLION EUROS

2020
7,605.4
MILLION EUROS



- Financial assets €6,446.6 M
84.7%
- Assets managed €1,158.8 M
15.2%

